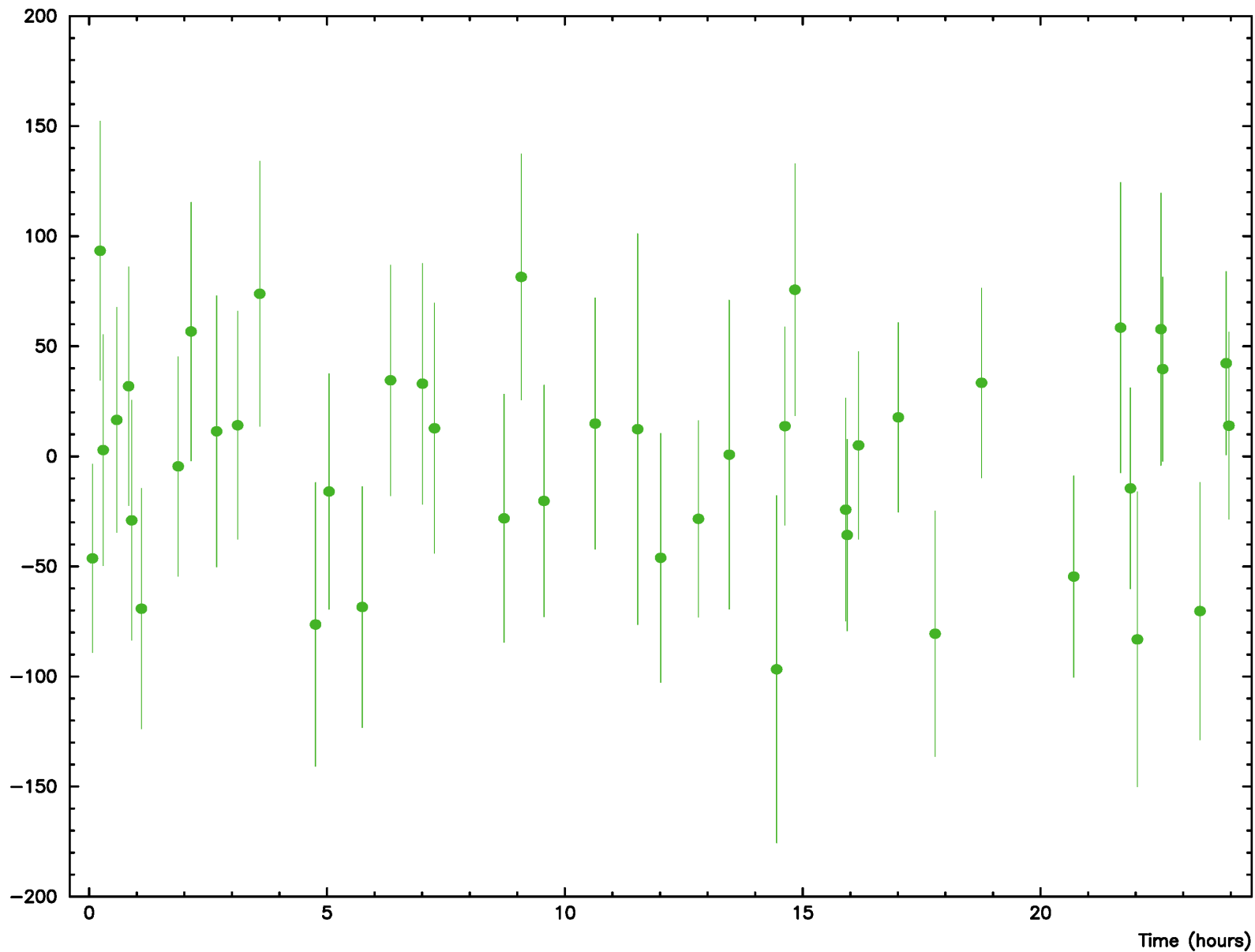


GGA012M -HARTRAO	8/	8
GGA012M -HOBART26	No Data	
GGA012M -KOKEE	21/	21
GGA012M -NYALES20	44/	44
GGA012M -WESTFORD	23/	23
GGA012M -WETTZELL	47/	47

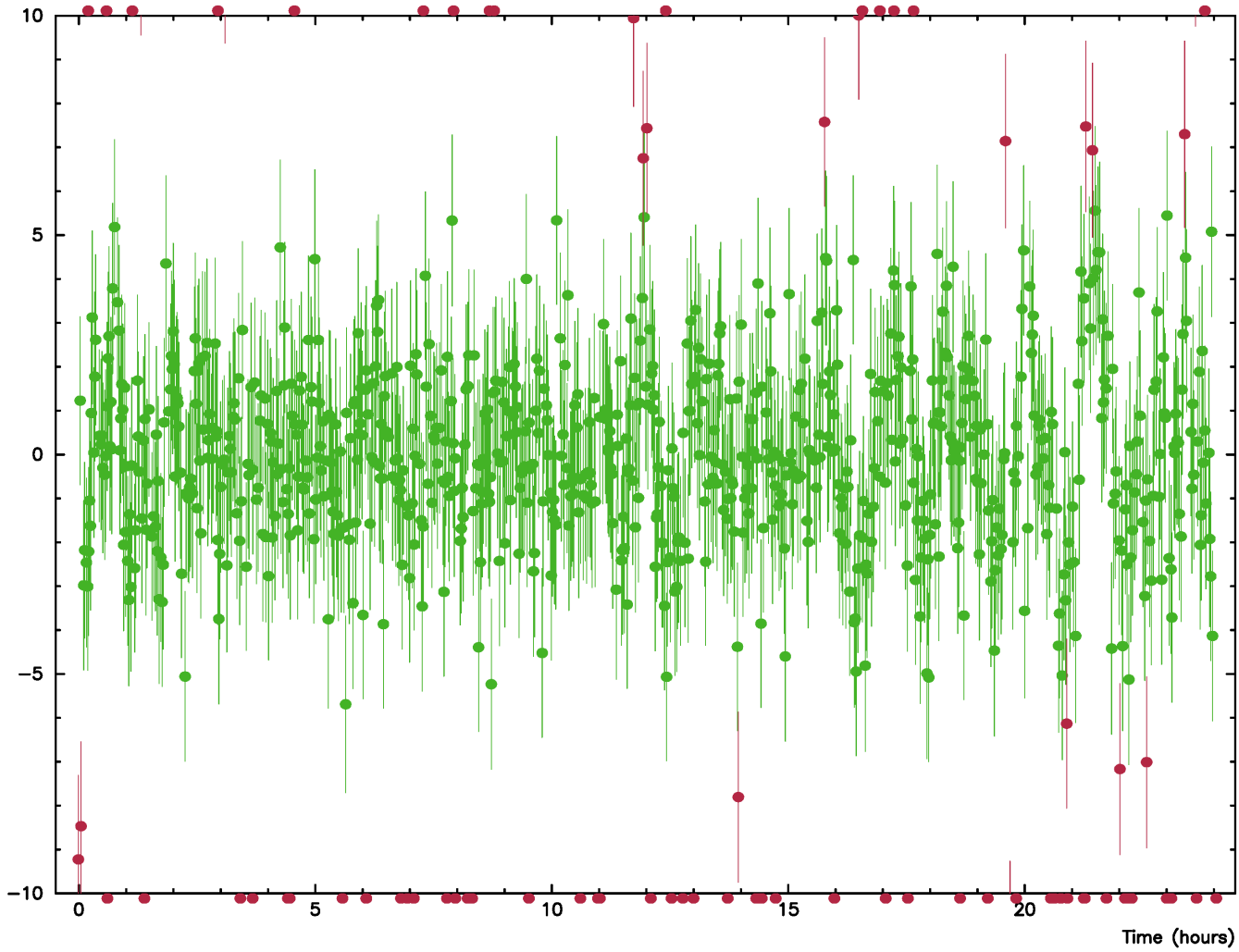
HARTRAO -HOBART26	41/	41
HARTRAO -KOKEE	No Data	
HARTRAO -NYALES20	33/	33
HARTRAO -WETTZELL	58/	58
HOBART26-KOKEE	34/	36
HOBART26-NYALES20	9/	9
HOBART26-WESTFORD	No Data	
HOBART26-WETTZELL	4/	4
KOKEE -NYALES20	47/	50
KOKEE -WESTFORD	14/	14
KOKEE -WETTZELL	33/	37
NYALES20-WESTFORD	27/	27
NYALES20-WETTZELL	127/	132
WESTFORD-WETTZELL	29/	29

1.	GGA012M	9999	NOAM	X Comp	1130730196.80 mm	-134.20 mm	10.94mm
2.	GGA012M	9999	NOAM	Y Comp	-4831245993.95 mm	546.05 mm	20.12mm
3.	GGA012M	9999	NOAM	Z Comp	3994228196.87 mm	-707.13 mm	23.90mm
	GGA012M	9999		U Comp	-882.05 mm	-882.05 mm	24.65mm
	GGA012M	9999		E Comp	-6.23 mm	-6.23 mm	8.05mm
	GGA012M	9999		N Comp	-195.36 mm	-195.36 mm	8.55mm

20180627_a <2> GGAO12M /NYALES20 Delay G_GXS (psec)



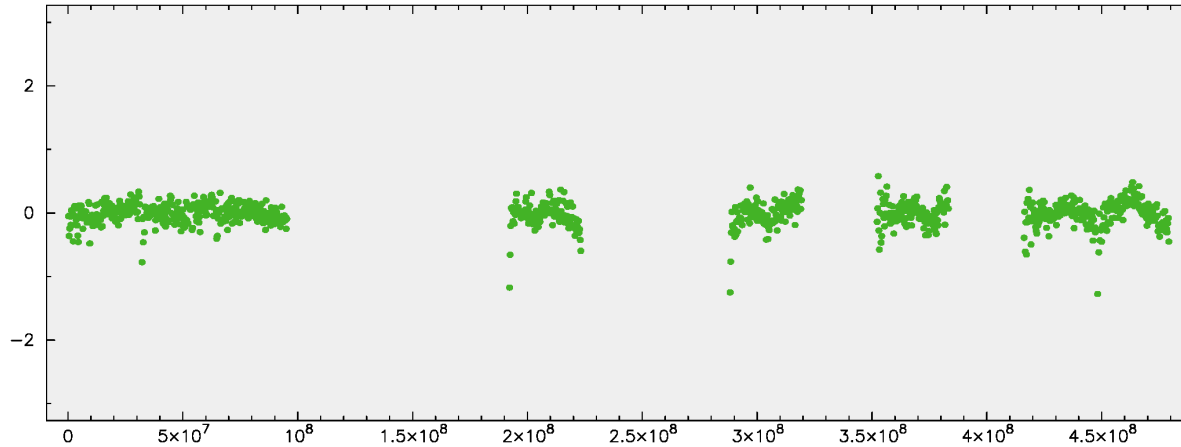
20200121_p <2> ONSA13NE/ONSA13SW Delay PX (psec)



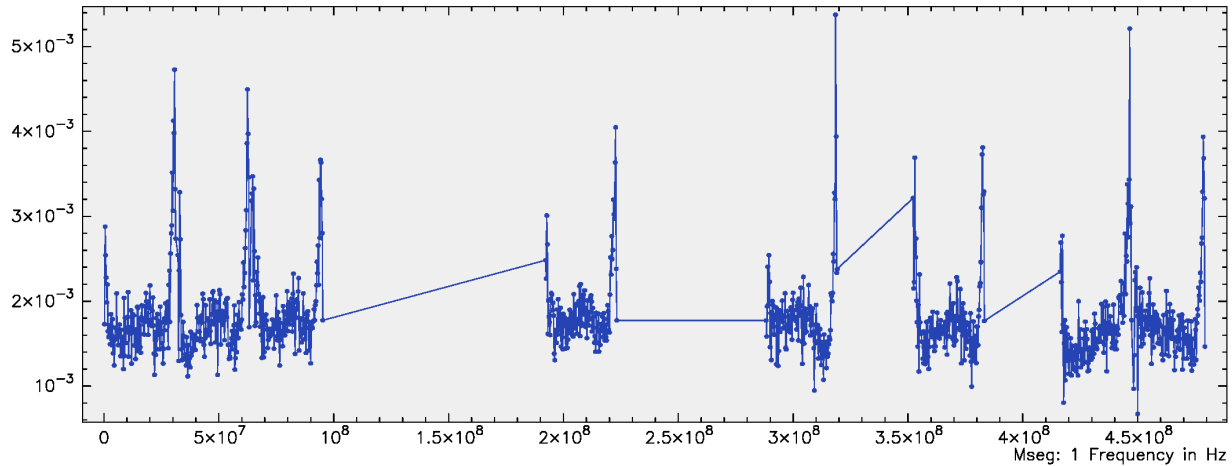
	Vector Mag(mm) & a-sigma	Length(mm) & a-sigma	Horizontal(mm) & a-sigma	Vertical(mm) & a-sigma
ONSA13NE 7316	to 74960.18	74960.18	3.57	4.71
ONSA13SW 7317	0.04	0.04	0.04	0.08

Fringe phs/amp for obs #128 Exp V00021 SNR=171.8

4-band I -pol fringe phase for 0552+398 at ONSA13NE/ONSA13SW in V00021

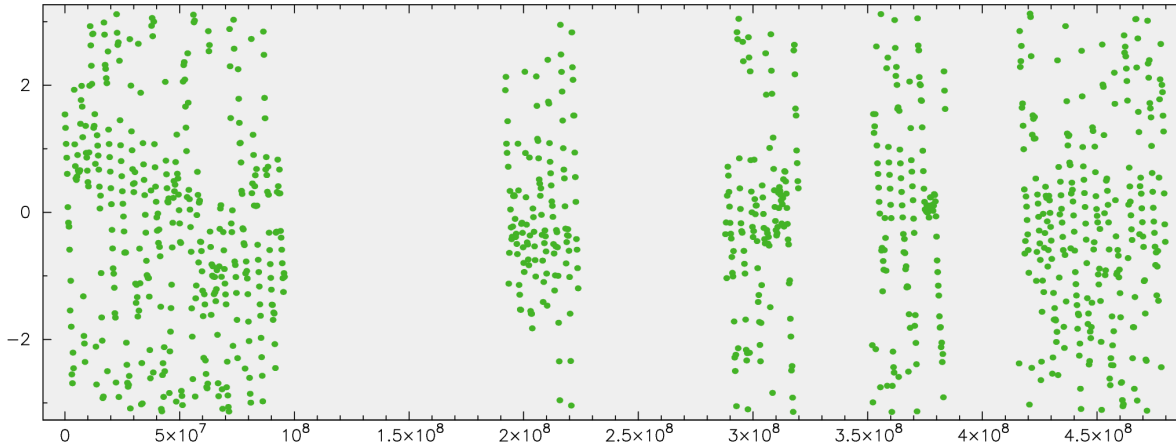


4-band I -pol fringe amplitude for 0552+398 at ONSA13NE/ONSA13SW in V00021

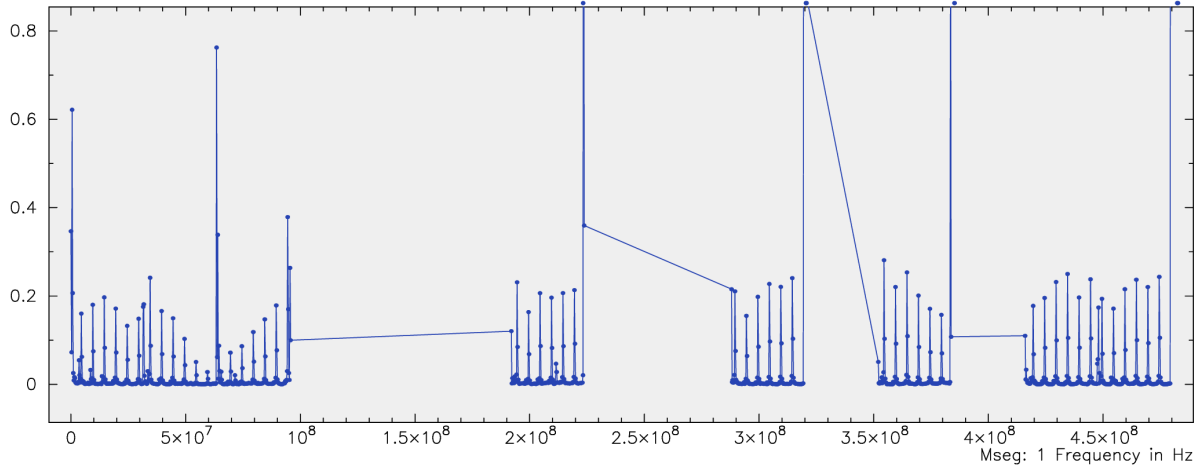


Fringe phs/amp for obs #128 Exp V00021 SNR=465.3

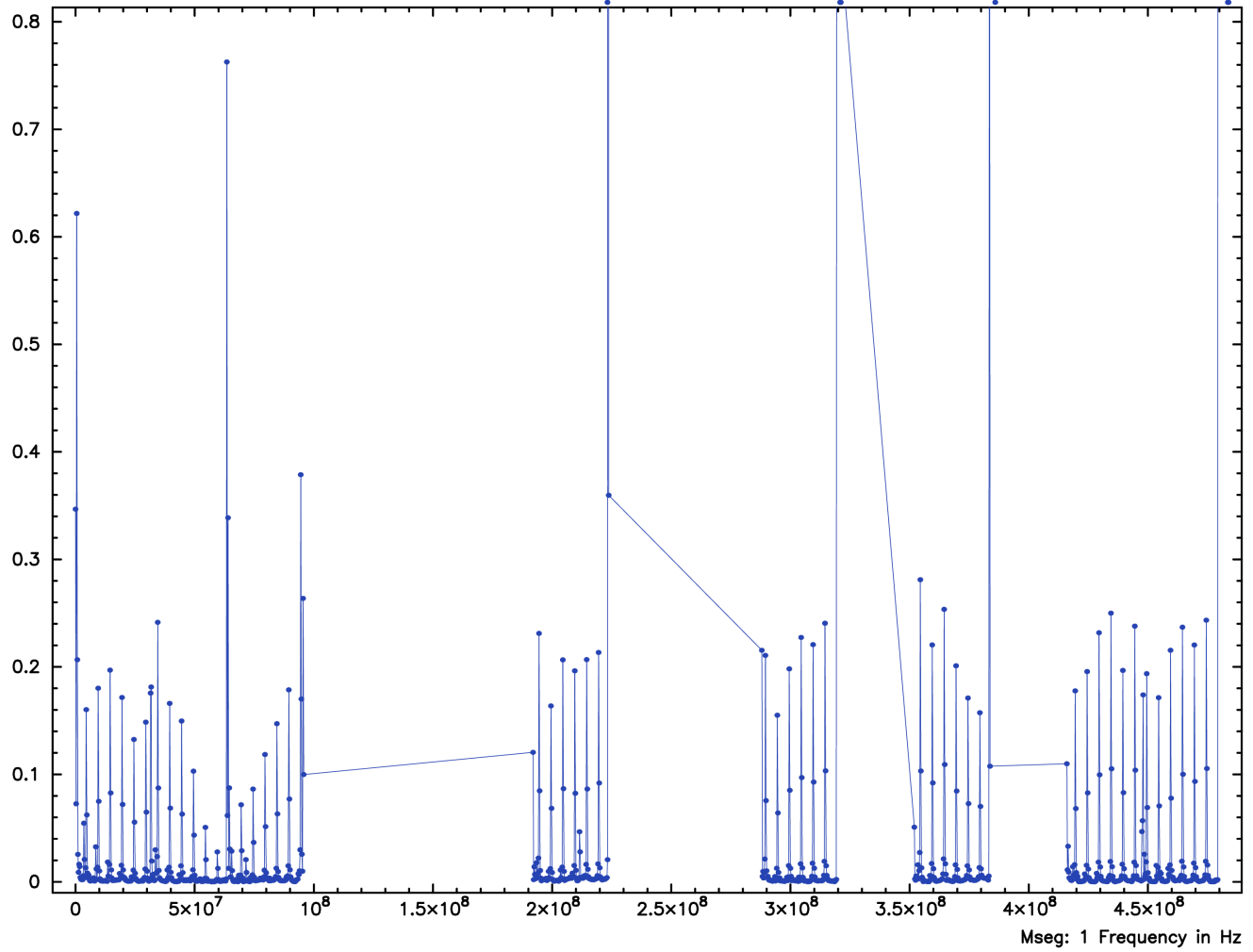
1-band I -pol fringe phase for 0552+398 at ONSA13NE/ONSA13SW in V00021



1-band I -pol fringe amplitude for 0552+398 at ONSA13NE/ONSA13SW in V00021



1-band I -pol fringe amplitude for 0552+398 at ONSA13NE/ONSA13SW



1-band I -pol fringe amplitude for 0552+398 at ONSA13NE/ONSA13SW

